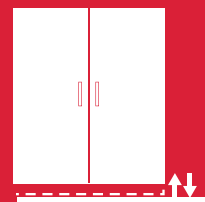
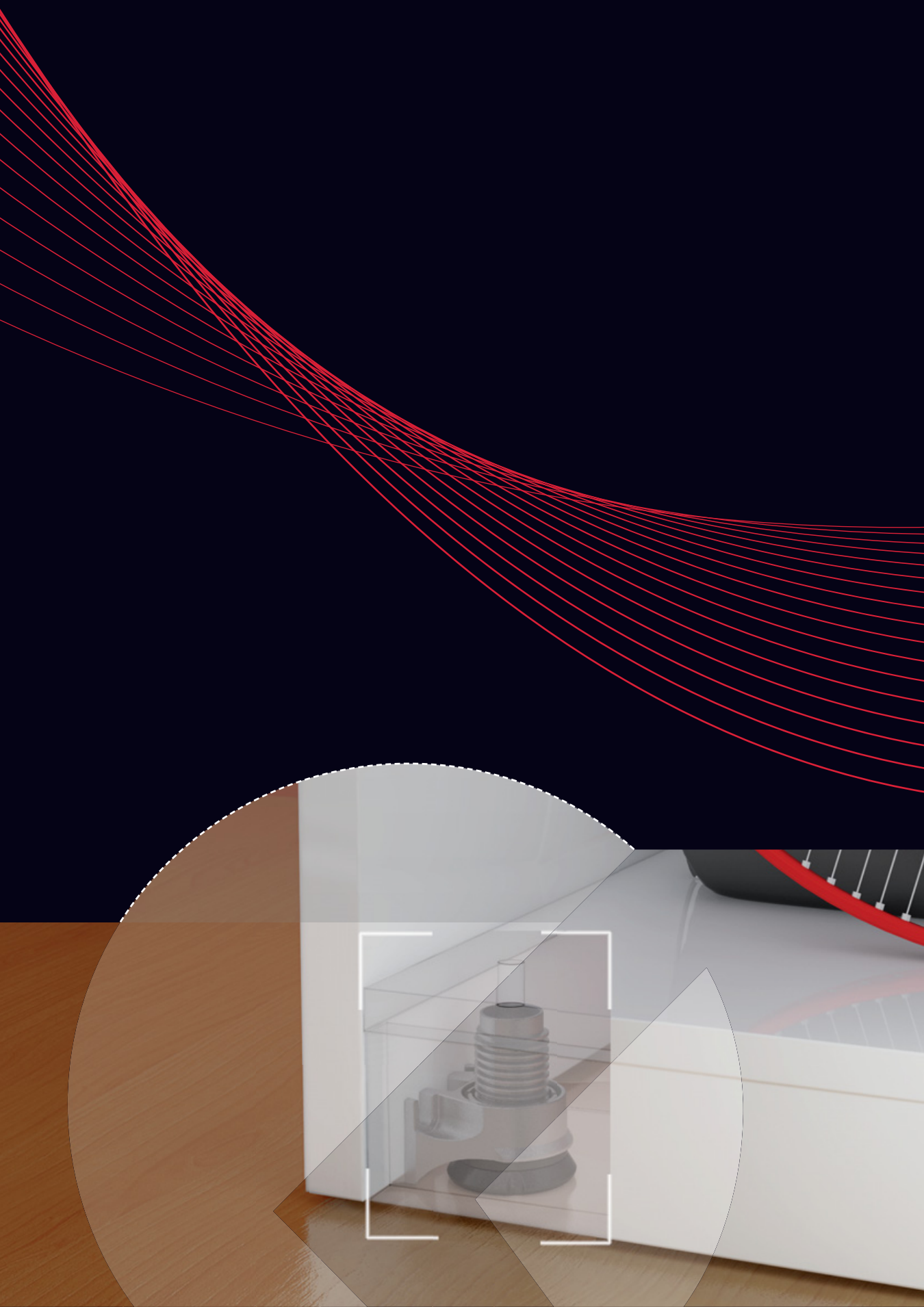


INTEGRATO WITH ZINC ALLOY FOOT



LEVELLERS





SYMBOLS AND FINISHES LEGEND

SYMBOLS



= SHELF SAFELY LOCKED DURING TRANSPORTATION AND AT HOME.



= ANTI-TURNOVER LOCKING SYSTEM



= NORMS / PATENTS



= PHILLIPS / POZIDRIV



= NEWTON



= PART.NO



= HEXAGONAL SOCKET



= FRICTION



= PCS. PER PACKAGE



= BLADE SLOT



= AUTOMATIC



= COMBI SLOT



= DROP DOWN



= CAPACITY LOADING



= COUNTERSUNK HEAD



= WOOD / GLASS THICKNESS



= PAN HEAD



= STANDARD HINGE



= HOLE DIAMETER



= FLANGE HEAD



= KIMANA HINGE



= DIAMETER



= FLAT HEAD



= FLAP HINGE



= LENGTH



= TRILOBULAR SCREW



= WITH SPRING



= HEIGHT



= SELF-TAPPING SCREW



= WITHOUT SPRING



= RIGHT VERSION



= EURO THREAD



= REVERSED SPRING



= LEFT VERSION



= METRIC THREAD



= SETTING CODE



= PRE-INSERTED SCREW



= FOR ROUND TUBE



= PCS. PER PAD



= PRE-INSERTED SCREW AND SPREADING BUSH



= FOR OVAL TUBE



= CUT ON REQUEST



= WITH BUFFER



= SELF ADHESIVE



= WITH MAGNET



= WITH FLANGE

NOTE: Printing errors and omissions may exist despite our best efforts to ensure accuracy. We reserve the right to alter specifications without notice.

MATERIALS

ZA = Zinc Alloy	ST = Steel	HSS = High Speed Steel	BR = Brass	ABS = Acrylonitrile Butadiene Styrene
ZAnk = Nickel-plated Zinc Alloy	STzk = Zinc-plated Steel	AL = Aluminium	WD = Wood	EVA = Ethylene Vinyl Acetate

EP = **ENGINEERING PLASTIC**

+ **EP** = other engineering plastic available on request

SR = **SOFT RUBBER**

+ **SR** = other soft rubber available on request

EPn = Natural Engineering Plastic	EPc = Clear Engineering Plastic	SRn = Natural Soft Rubber
EPw = White Engineering Plastic	EPg = Grey Engineering Plastic	SRw = White Soft Rubber
EPwg = Water Green Engineering Plastic		SRb = Black Soft Rubber



FINISHES



= OTHER FINISHES AVAILABLE ON REQUEST

PART. NO	FINISHES	PART. NO	FINISHES	PART. NO	FINISHES
AA	Natural	JB	Bright Aluminium	QB	Walnut
AB	White	JC	Aluminium - Chrome	RO	Red
AC	Opal White	JD	Matt Aluminium	UZ	T -Met
AE	White 9010	JE	Satin-finished Aluminium	WA	Bronzed
AK	Champagne	JF	Aluminium - Brass	WI	Burnished
AL	Ivory	JG	Aluminium 5	XD	Satin-finished Steel
EA	Black	JL	Aluminium PE 11	YA	Nickel-plated
EB	Glossy Black	JM	Aluminium RAL 9006	YB	Bright Nickel-plated
EC	Matt Black	KA	Chrome	YC	Matt Nickel-plated
EE	Anthracite	KB	Bright Chrome	YD	Satin-finished Nickel-plated
FU	Gunmetal	KC	Matt Chrome	ZA	Zinc alloy
GR	Raw	MA	Brown	ZN	Zinc-plated
HA	Brass-Plated	MB	Light Brown 1	ZQ	Bright Gold
HH	Tropicalized	NN	Metallic Beige	ZY	Titanium
HL	Raw Brass	NO	Beige	ZZ	Clear
IA	Grey	OA	Oak	00	Insignificant finish
IB	Metallic Grey	OZ	Ash		
IF	Middle Grey	PA	Light Ash		
IJ	Light Grey	PZ	Beech		
IL	Grey 20	QA	Maple		



INTEGRATO WITH ZINC ALLOY FOOT

INTEGRATO is the new leveller suitable to align heavy duty wardrobes, bookcases and modular furniture.

The leveller is installed and safely fixed onto the bottom of the carcass through a wide range of supports complete with pins and screw holes, spikes and screw holes or again screw holes only.

A further securement in position can be obtained by a countersunk 4x18mm length screw from underneath first and also 2 panhead 4x15mm length screws from the side secondly if required.

A Ø 8mm through hole in the furniture bottom, allows to adjust the leveller from the above, by using a S6mm allen wrench or both cross and

blade screwdriver.

The zinc alloy die-cast foot, is provided with an independent engineering plastic glide in order to make the adjustment easier and to prevent the scratching of the floor too.

Over the leveller can be slotted a spacer to give a structural support to the furniture bottom. The spacer is available in three heights.

Capable of supporting a 175kg load each.

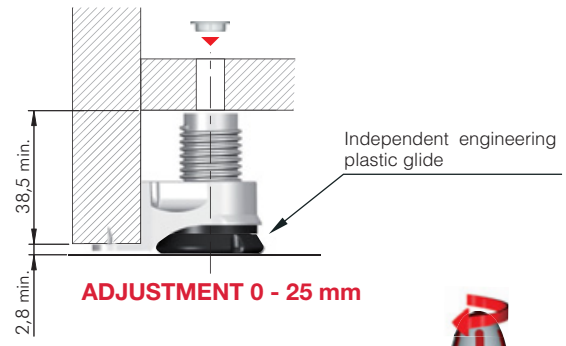
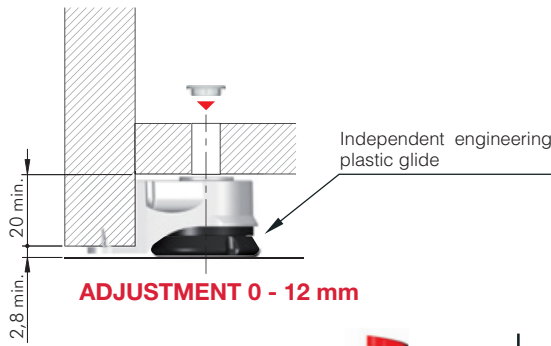
12mm adjustment
25mm adjustment



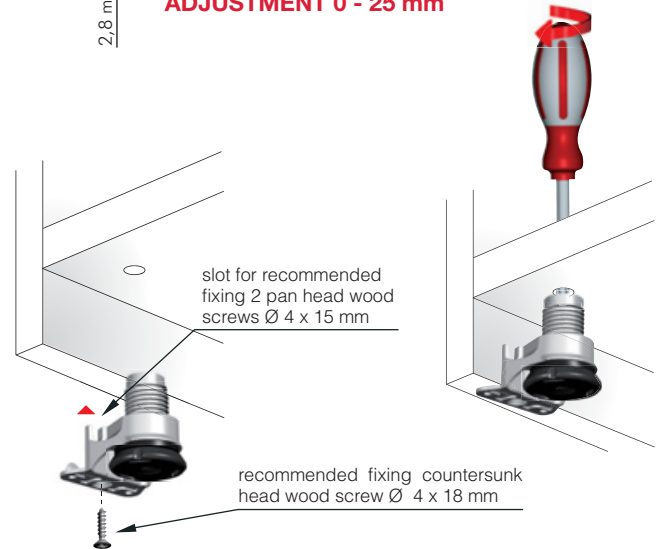
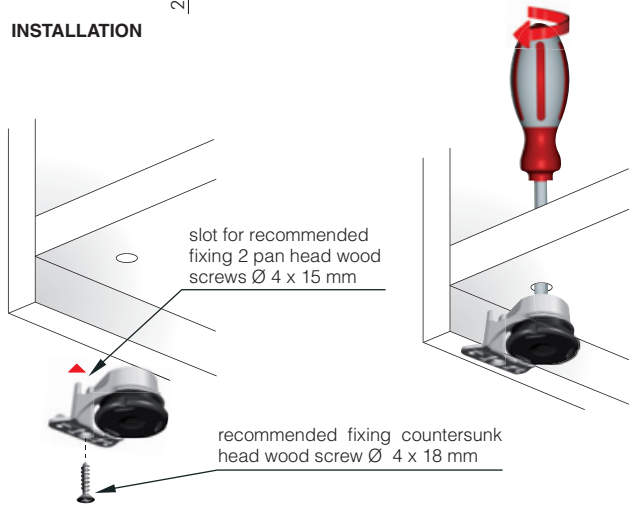
175 Kg per piece



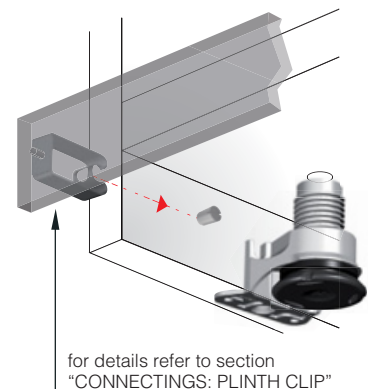
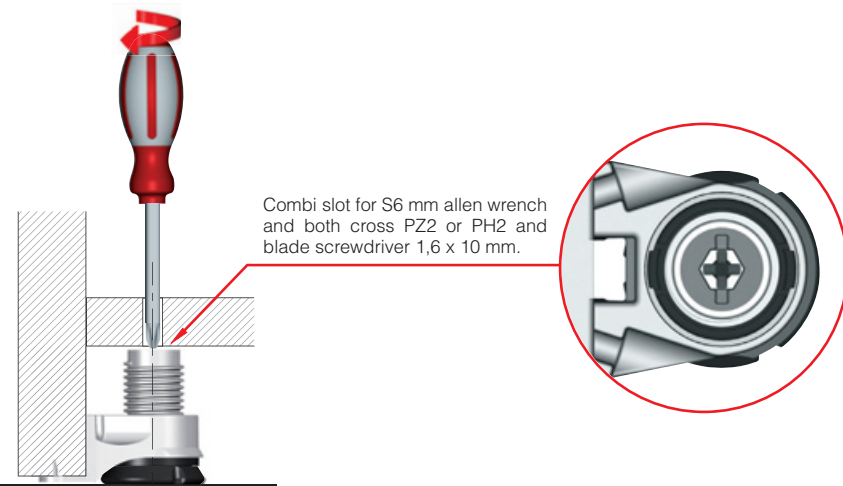
Tested in accordance with CATAS procedures



INSTALLATION

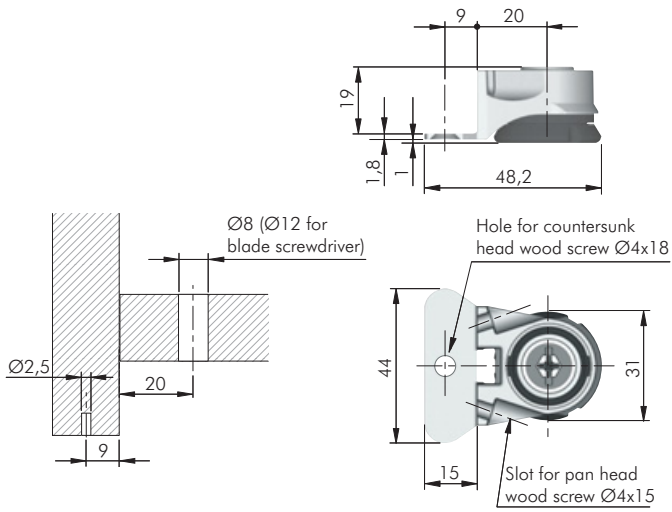


ADJUSTMENT

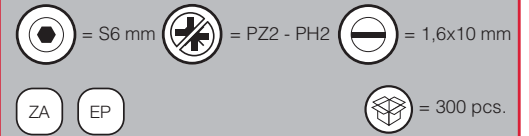




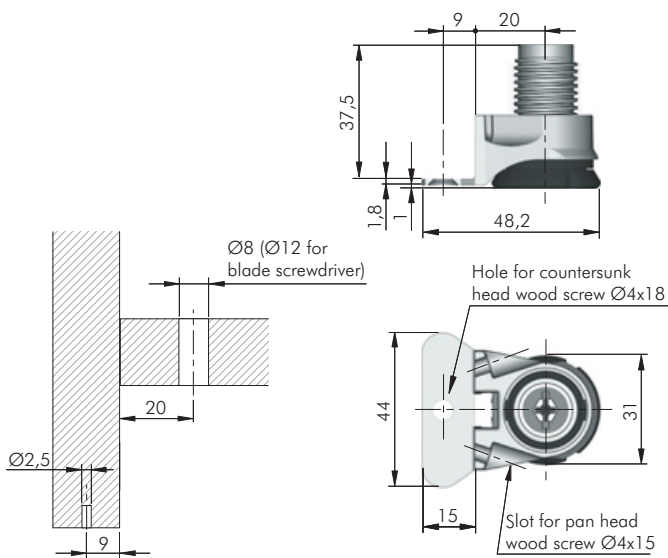
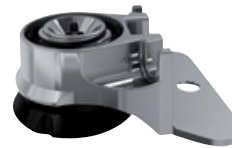
INTEGRATO A



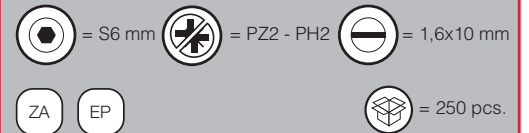
ADJUSTMENT 0 - 12 mm



3010101000



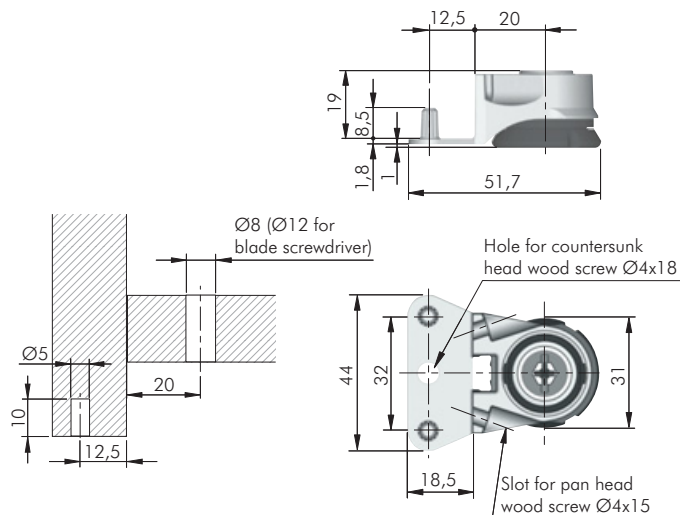
ADJUSTMENT 0 - 25 mm



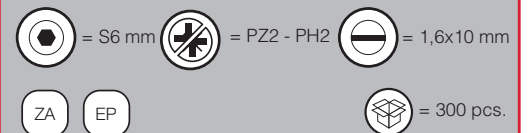
3010102000



INTEGRATO B

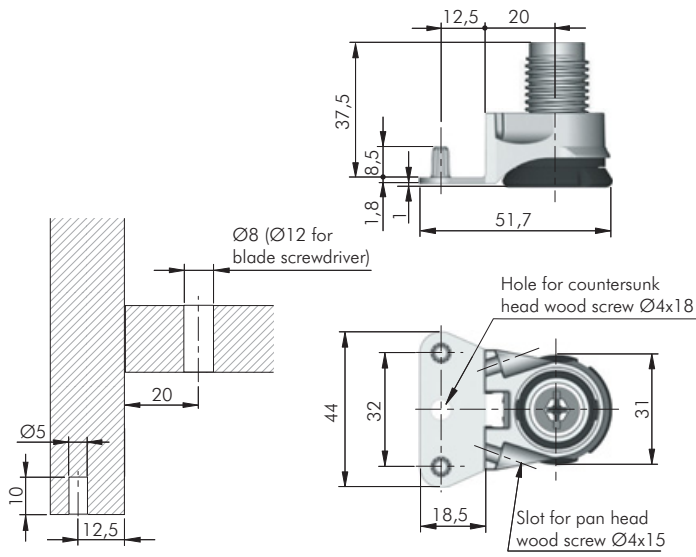


ADJUSTMENT 0 - 12 mm

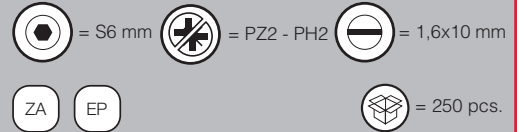


3010201000

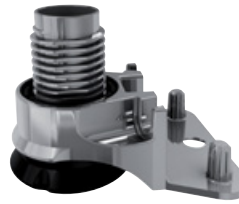




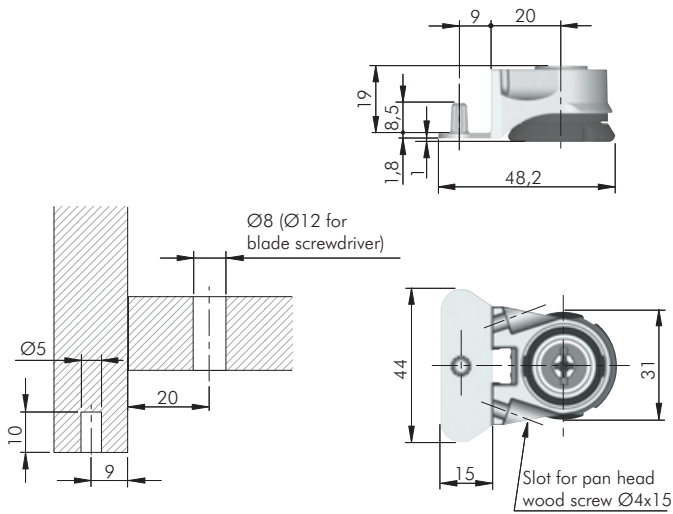
ADJUSTMENT 0 - 25 mm



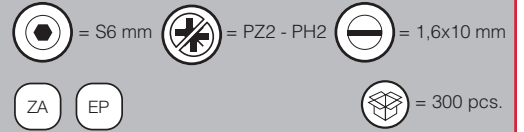
3010202000



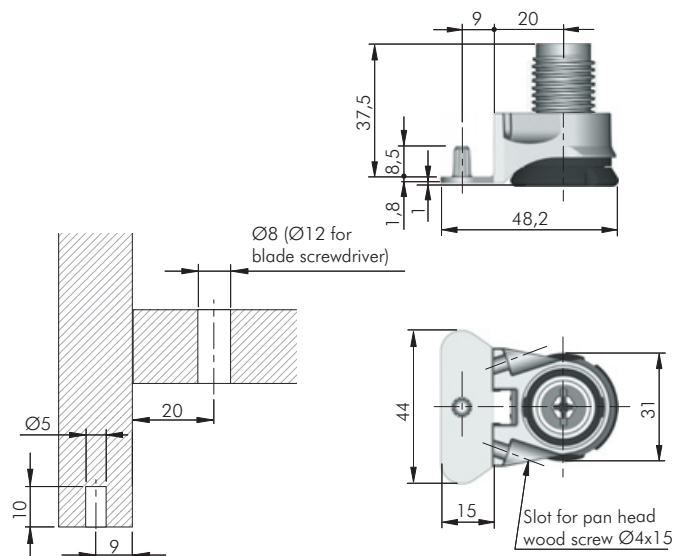
INTEGRATO C



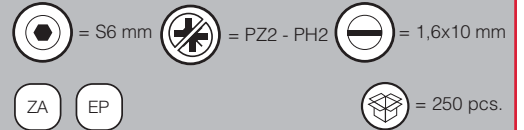
ADJUSTMENT 0 - 12 mm



3010301000



ADJUSTMENT 0 - 25 mm

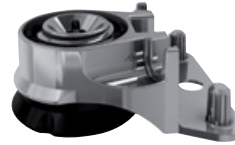
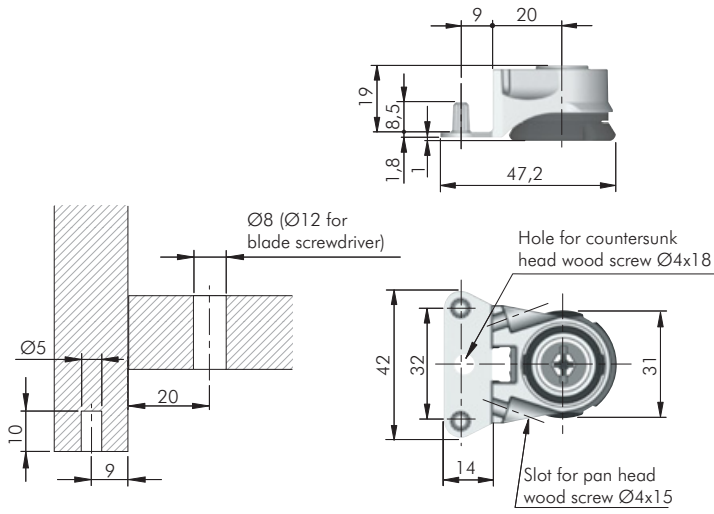


3010302000

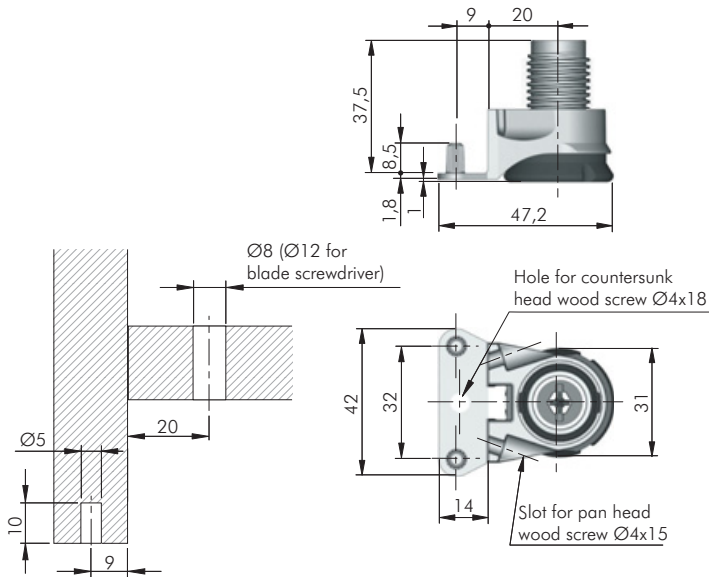
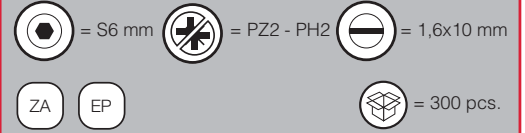




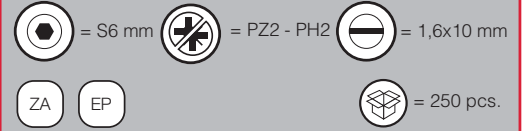
INTEGRATO D



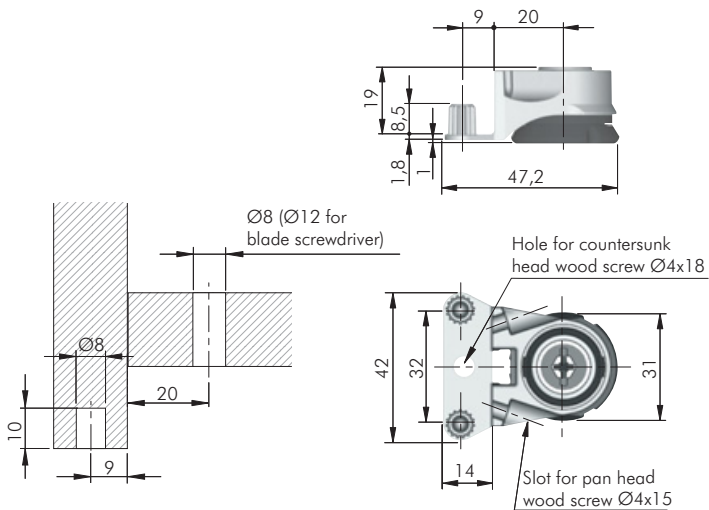
ADJUSTMENT 0 - 12 mm



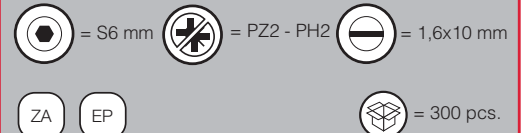
ADJUSTMENT 0 - 25 mm

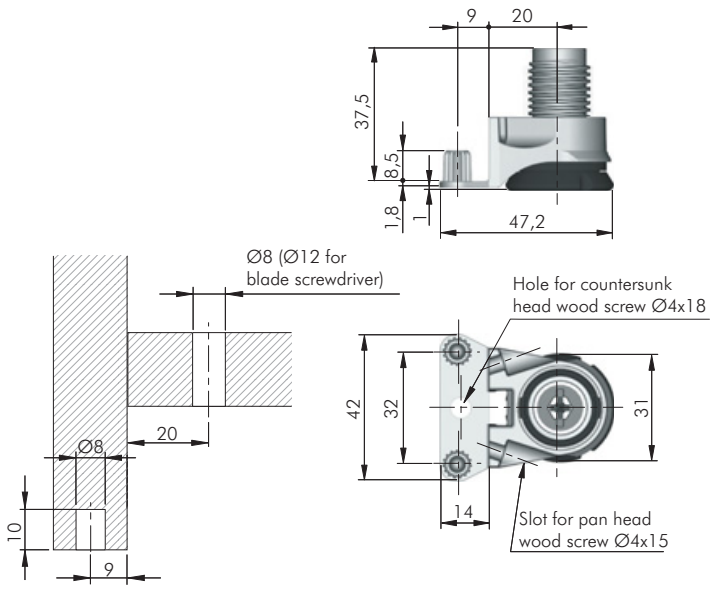


INTEGRATO E

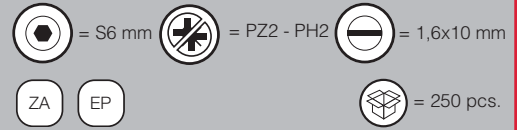


ADJUSTMENT 0 - 12 mm

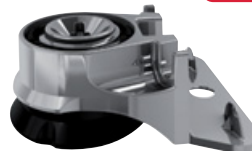
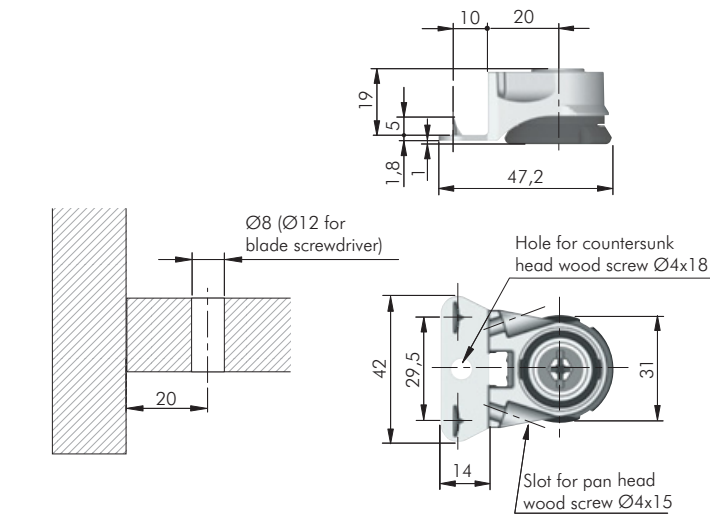




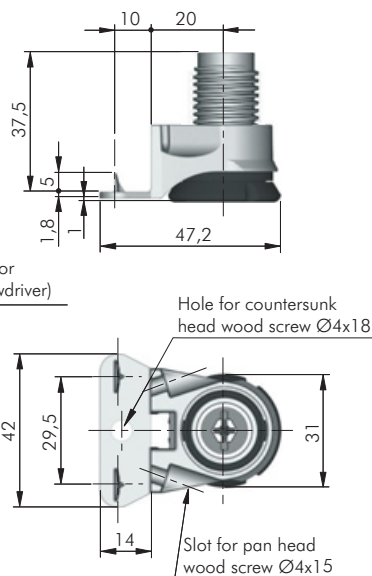
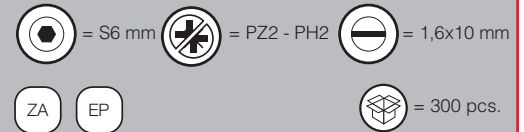
ADJUSTMENT 0 - 25 mm



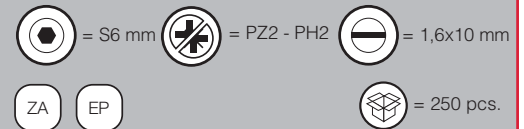
INTEGRATO G



ADJUSTMENT 0 - 12 mm

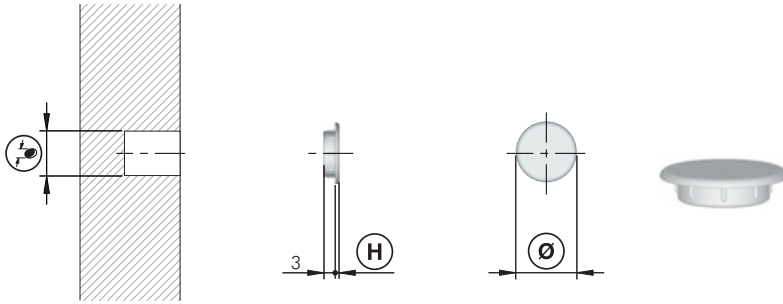


ADJUSTMENT 0 - 25 mm



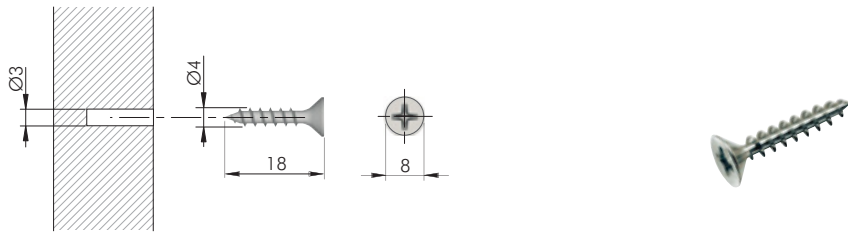


INTEGRATO ACCESSORY

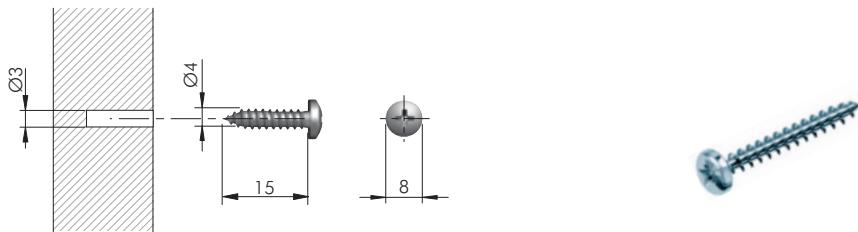


= Ø 8, Ø 12 mm					
EP					
23002010AB	Ø 8	Ø 11	H 1	5000	
23002030AB	Ø 12	Ø 15	H 1	5000	

INTEGRATO FIXING ACCESSORIES



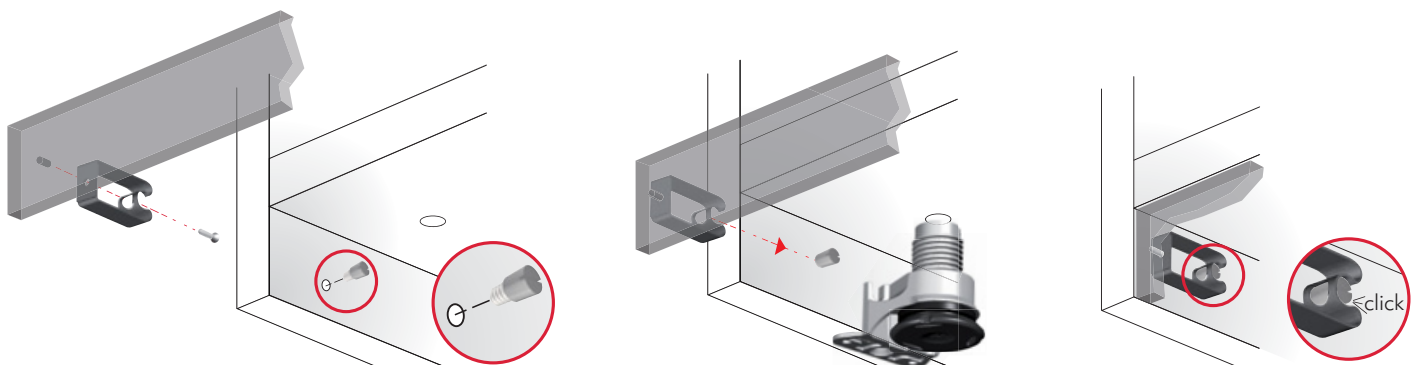
= Ø 3 mm					
ST					= 6000 pcs.
60101580ZN					

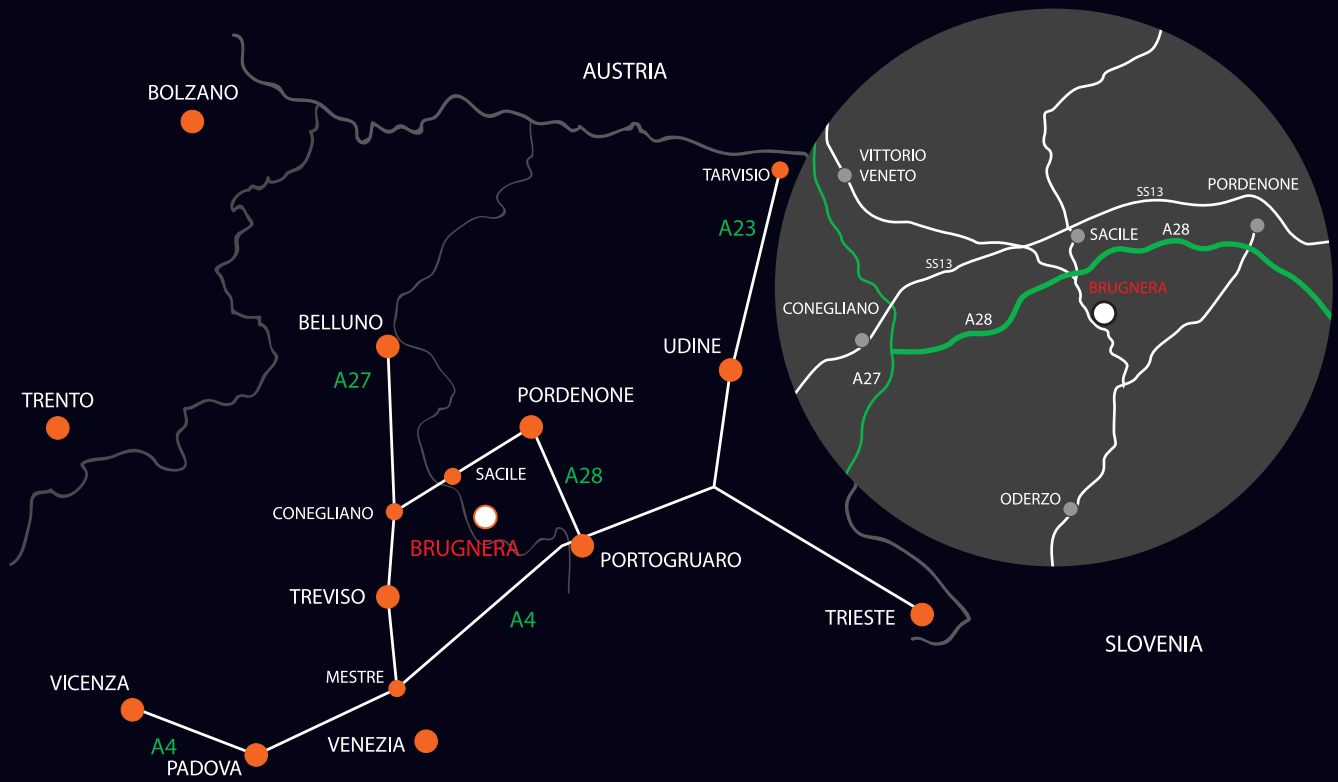


= Ø 3 mm					
ST					= 1000 pcs.
60103230ZN					

PLINTH CLIP FOR INTEGRATO

- For details refer to section "CONNECTINGS: PLINTH CLIP"





www.italianaferramenta.com