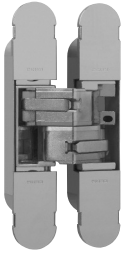


**1130** 134x24 mm



Cod.	Zinc alloy and steel		
CI001130OTT00	brass-plated	180°	9
CI001130NIK00	nickel-plated	180°	9
CI001130BRO00	bronze-plated	180°	9
CI001130COP00	matte chrome	180°	9
CI001130ARG00	silver painted	180°	9

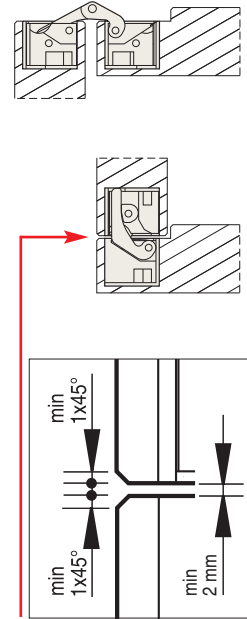
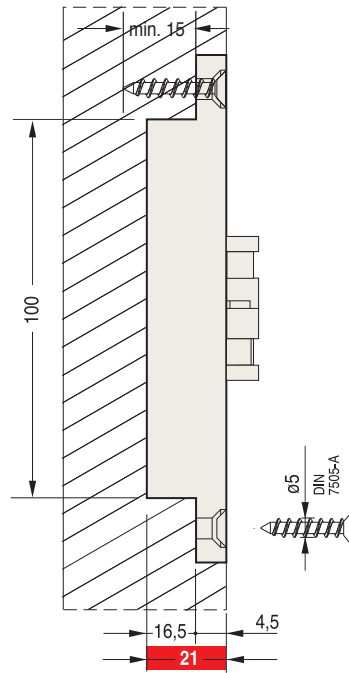
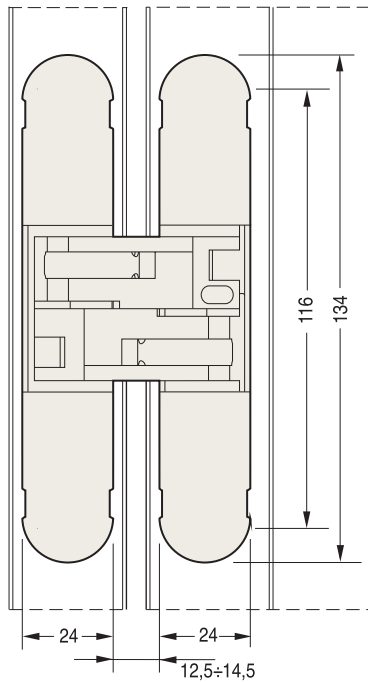
Patented



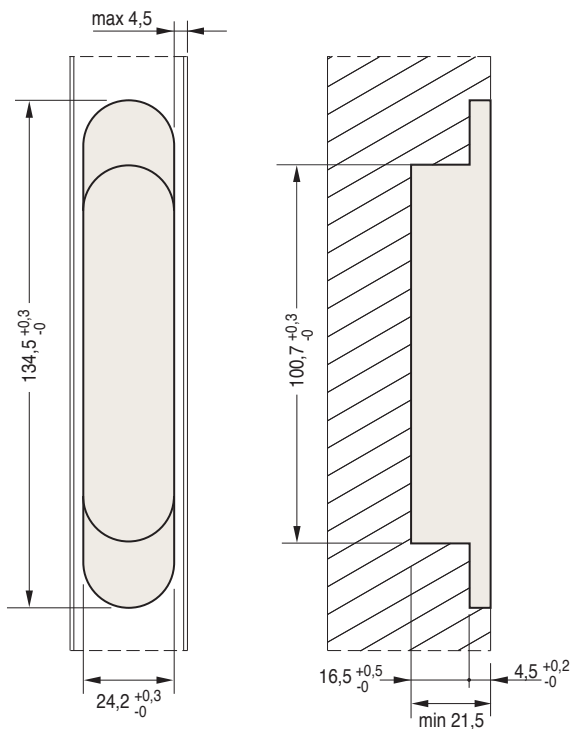
ICIM  
Product certification n. 020AW/0  
Classification 3-6-1-3/3-4



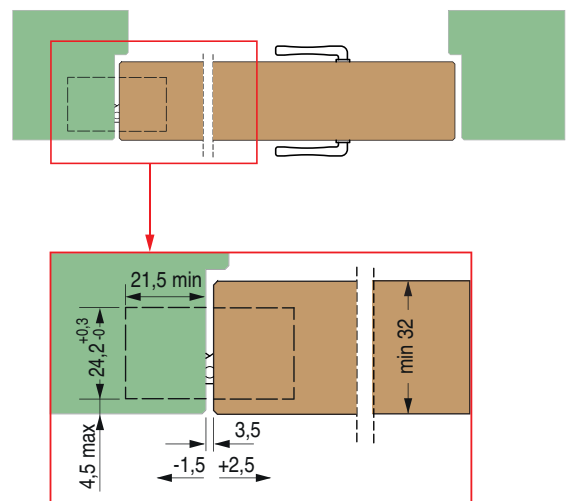
LAPI  
Attestation of fire  
Reference standard UNI EN 1634-2  
ed. 2009

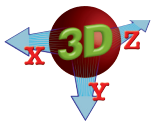


Mortise dimensions



Cross section

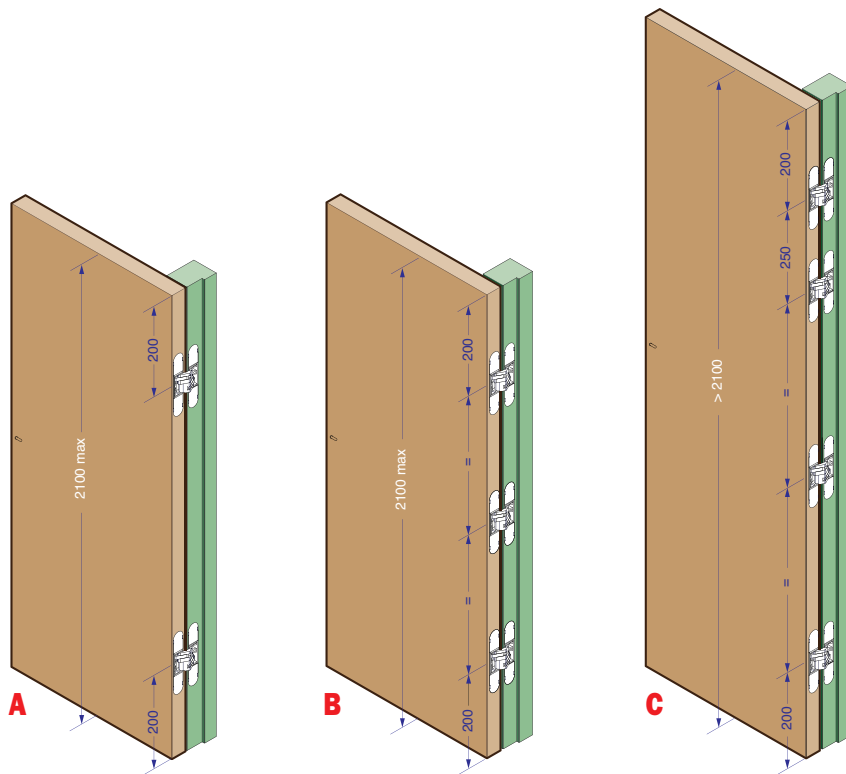




**1130** 134x24 mm



Load capacity



Wings  
850 mm wide

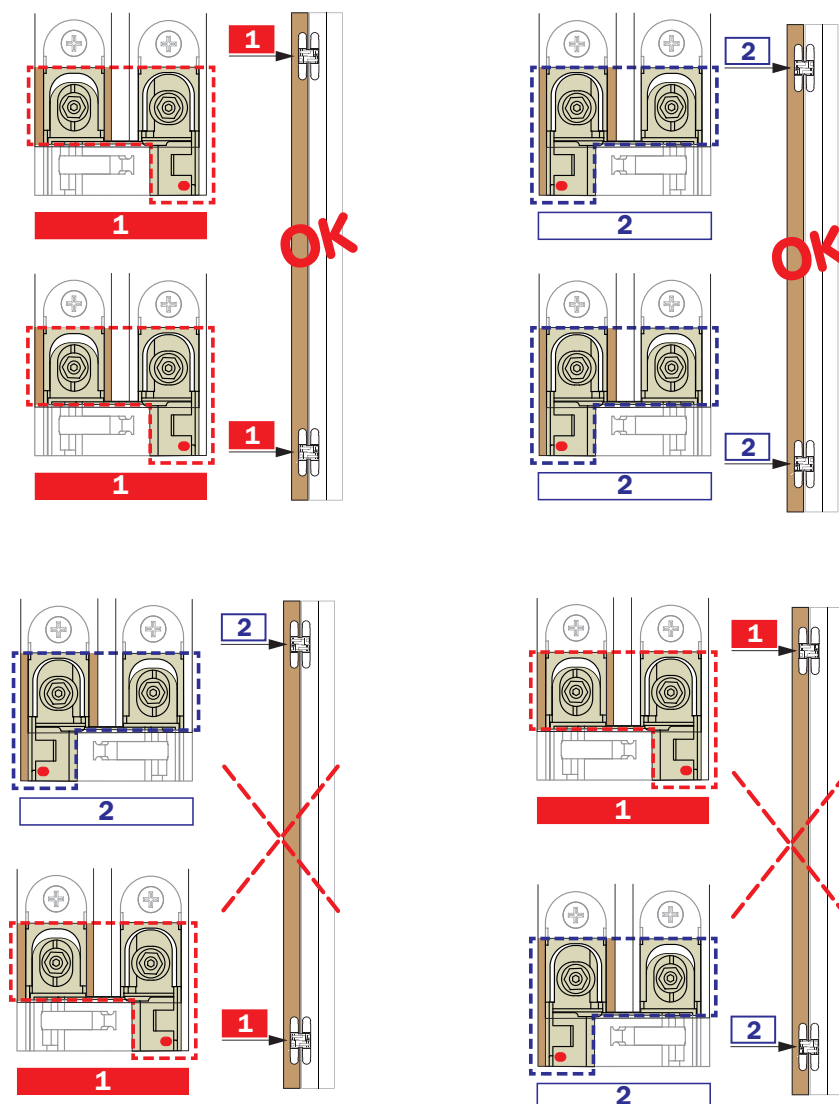
- up to 2100 mm high  
**A** - 2 hinges 40 kg  
**B** - 3 hinges 60 kg
- over 2100 mm high  
**C** - 4 hinges 60 kg

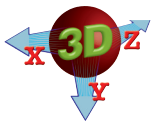
Before using a door closer, contact our technical office at ph. +39 031 771316

All hinges must be adjusted

Lubricate the hinges at least once a year

Installation

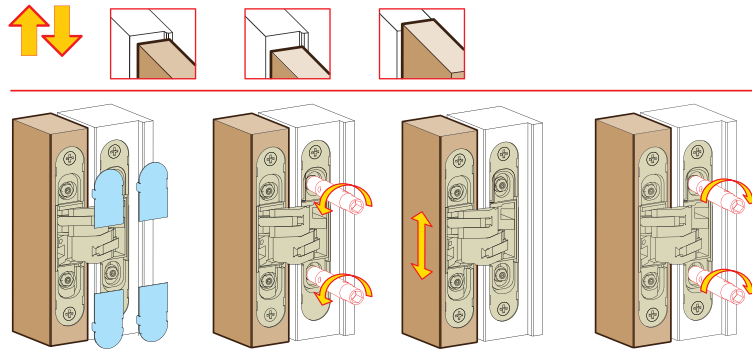
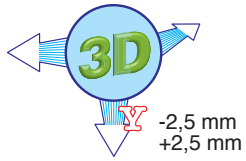




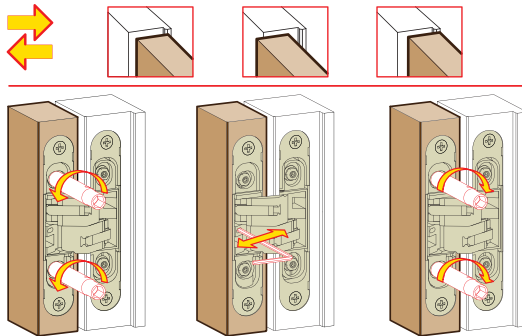
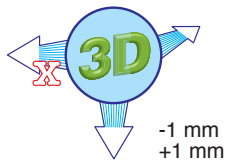
**1130** 134x24 mm



### Vertical adjustment



### Horizontal adjustment



### Depth adjustment

