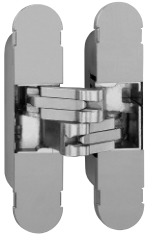
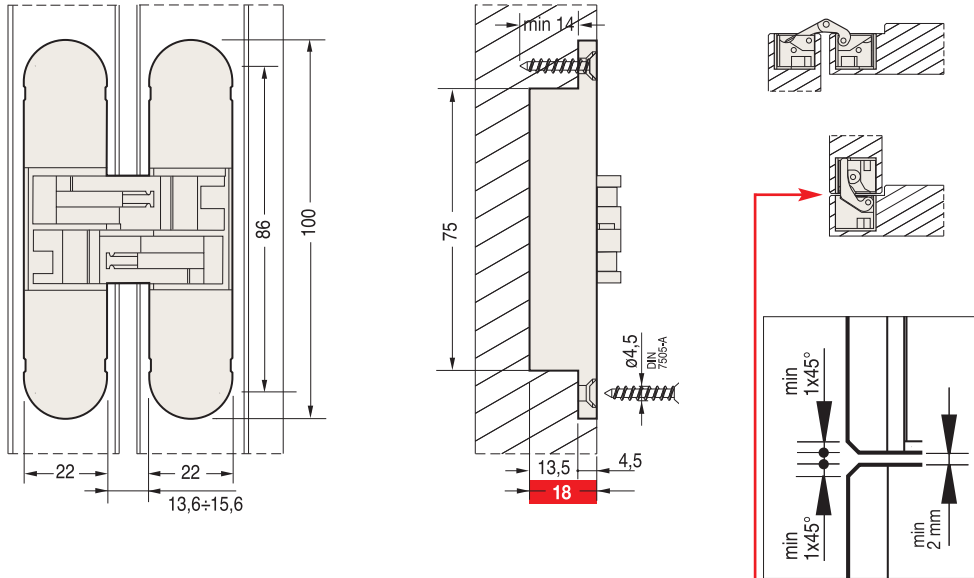


1129 100x22 mm

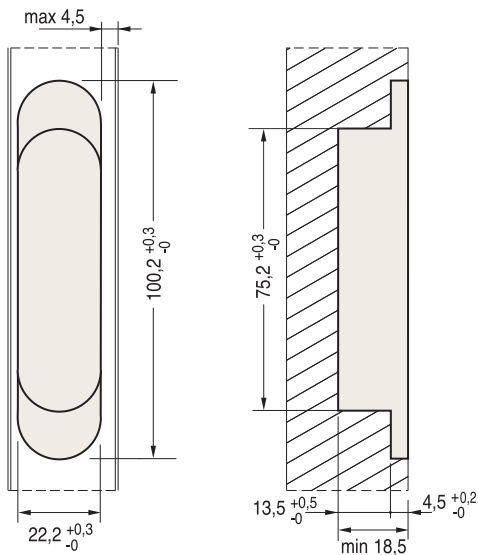


Cod.	Stainless		
CI001129OTT00	brass-plated	180°	12
CI001129NIK00	nickel-plated	180°	12
CI001129COP00	matte chrome	180°	12
CI001129ARG00	silver painted	180°	12

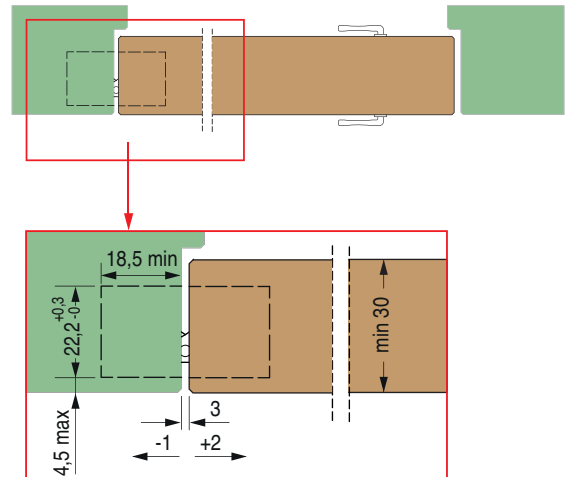
Patented

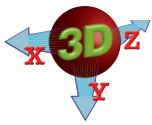


Mortise dimensions



Cross section

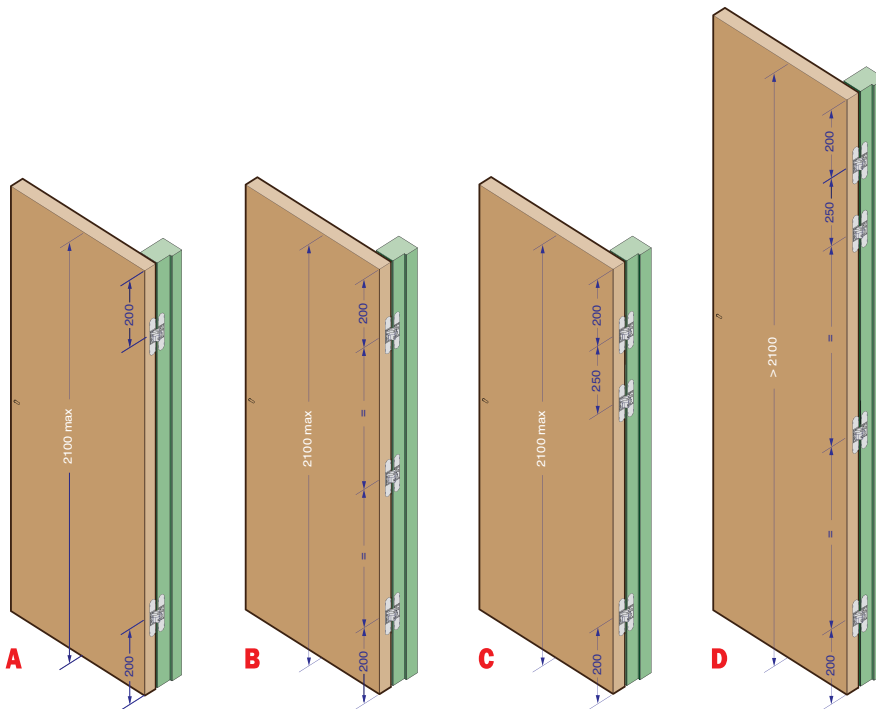




1129 100x22 mm



Load capacity



Wings
850 mm wide

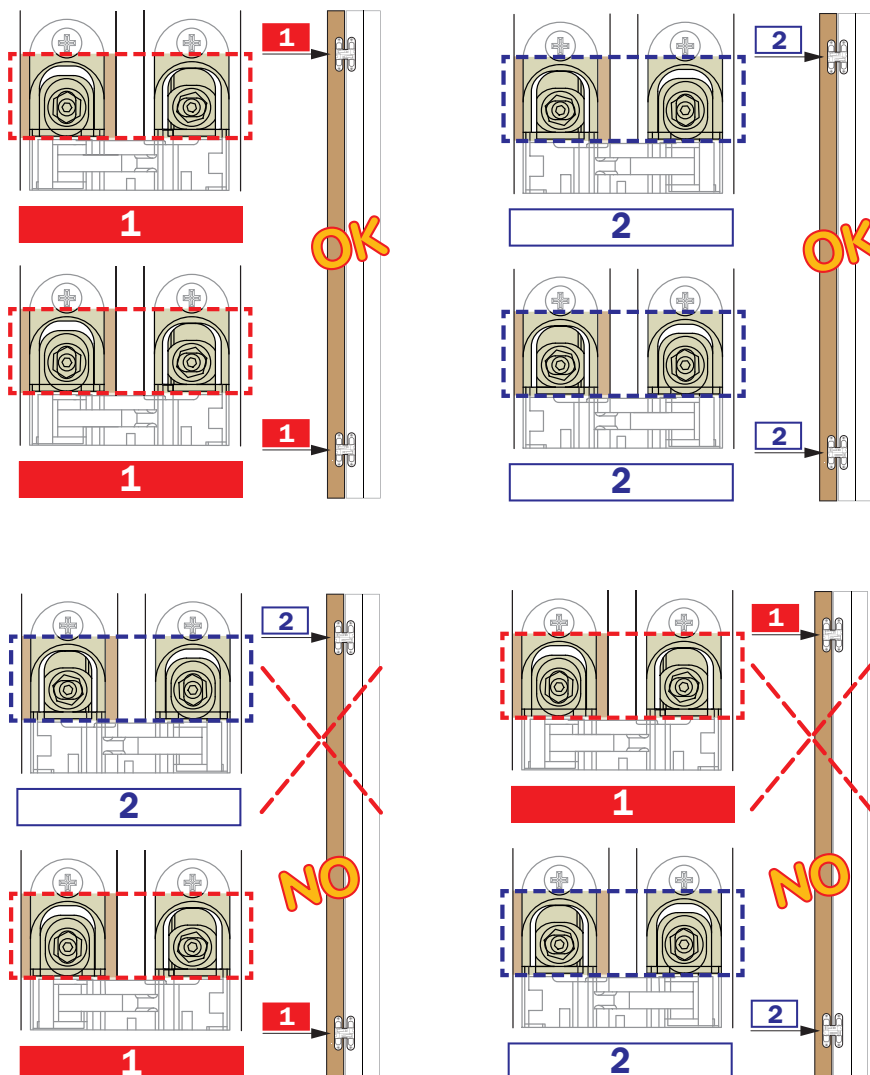
- up to 2100 mm high
 - A - 2 hinges 25 kg
 - B - 3 hinges 30 kg
 - C - 3 hinges 40 kg
- over 2100 mm high
 - D - 4 hinges 40 kg

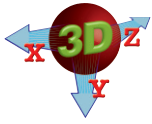
Before using a door closer, contact our technical office at ph. +39 031 771316

All hinges must be adjusted

Lubricate the hinges at least once a year

Installation

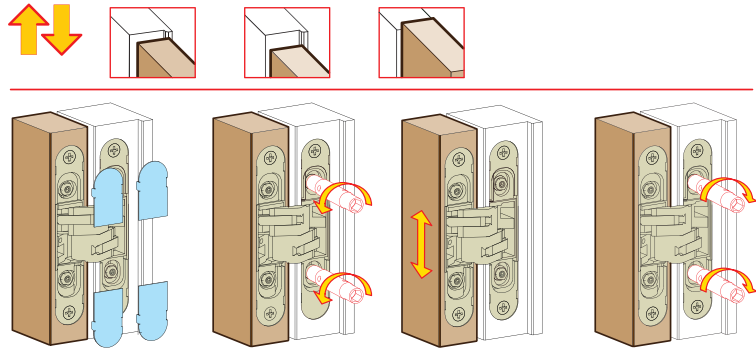
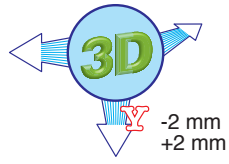




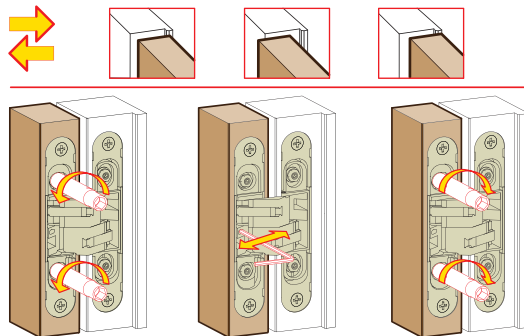
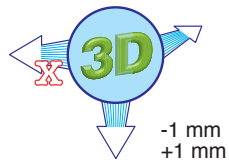
1129 100x22 mm



Vertical adjustment



Horizontal adjustment



Depth adjustment

