

PK2 SIDE BRACKET ROUND LEDGE



SHELF  
SUPPORTS



# SYMBOLS AND FINISHES LEGEND

## SYMBOLS



= SHELF SAFELY LOCKED DURING TRANSPORTATION AND AT HOME.



= ANTI-TURNOVER LOCKING SYSTEM



= NORMS / PATENTS



= PHILLIPS / POZIDRIV



= NEWTON



= PART.NO



= HEXAGONAL SOCKET



= FRICTION



= PCS. PER PACKAGE



= BLADE SLOT



= AUTOMATIC



= COMBI SLOT



= DROP DOWN



= CAPACITY LOADING



= COUNTERSUNK HEAD



= WOOD / GLASS THICKNESS



= PAN HEAD



= STANDARD HINGE



= HOLE DIAMETER



= FLANGE HEAD



= KIMANA HINGE



= DIAMETER



= FLAT HEAD



= FLAP HINGE



= LENGTH



= TRILOBULAR SCREW



= WITH SPRING



= HEIGHT



= SELF-TAPPING SCREW



= WITHOUT SPRING



= RIGHT VERSION



= EURO THREAD



= REVERSED SPRING



= LEFT VERSION



= METRIC THREAD



= SETTING CODE



= PRE-INSERTED SCREW



= FOR ROUND TUBE



= PCS. PER PAD



= PRE-INSERTED SCREW AND SPREADING BUSH



= FOR OVAL TUBE



= CUT ON REQUEST



= WITH BUFFER



= SELF ADHESIVE



= WITH MAGNET



= WITH FLANGE

NOTE: Printing errors and omissions may exist despite our best efforts to ensure accuracy. We reserve the right to alter specifications without notice.

## MATERIALS

<b>ZA</b> = Zinc Alloy	<b>ST</b> = Steel	<b>HSS</b> = High Speed Steel	<b>BR</b> = Brass	<b>ABS</b> = Acrylonitrile Butadiene Styrene
<b>ZAnk</b> = Nickel-plated Zinc Alloy	<b>STzk</b> = Zinc-plated Steel	<b>AL</b> = Aluminium	<b>WD</b> = Wood	<b>EVA</b> = Ethylene Vinyl Acetate

**EP** = **ENGINEERING PLASTIC**

+ **EP** = other engineering plastic available on request

**SR** = **SOFT RUBBER**

+ **SR** = other soft rubber available on request

<b>EPn</b> = Natural Engineering Plastic	<b>EPc</b> = Clear Engineering Plastic	<b>SRn</b> = Natural Soft Rubber
<b>EPw</b> = White Engineering Plastic	<b>EPg</b> = Grey Engineering Plastic	<b>SRw</b> = White Soft Rubber
<b>EPwg</b> = Water Green Engineering Plastic		<b>SRb</b> = Black Soft Rubber



## FINISHES



= OTHER FINISHES AVAILABLE ON REQUEST

PART. NO	FINISHES	PART. NO	FINISHES	PART. NO	FINISHES
AA	Natural	JB	Bright Aluminium	QB	Walnut
AB	White	JC	Aluminium - Chrome	RO	Red
AC	Opal White	JD	Matt Aluminium	UZ	T -Met
AE	White 9010	JE	Satin-finished Aluminium	WA	Bronzed
AK	Champagne	JF	Aluminium - Brass	WI	Burnished
AL	Ivory	JG	Aluminium 5	XD	Satin-finished Steel
EA	Black	JL	Aluminium PE 11	YA	Nickel-plated
EB	Glossy Black	JM	Aluminium RAL 9006	YB	Bright Nickel-plated
EC	Matt Black	KA	Chrome	YC	Matt Nickel-plated
EE	Anthracite	KB	Bright Chrome	YD	Satin-finished Nickel-plated
FU	Gunmetal	KC	Matt Chrome	ZA	Zinc alloy
GR	Raw	MA	Brown	ZN	Zinc-plated
HA	Brass-Plated	MB	Light Brown 1	ZQ	Bright Gold
HH	Tropicalized	NN	Metallic Beige	ZY	Titanium
HL	Raw Brass	NO	Beige	ZZ	Clear
IA	Grey	OA	Oak	00	Insignificant finish
IB	Metallic Grey	OZ	Ash		
IF	Middle Grey	PA	Light Ash		
IJ	Light Grey	PZ	Beech		
IL	Grey 20	QA	Maple		



## PK2 FOR 18 - 19 mm SHELF SIDE BRACKET ROUND LEDGE

New connecting fitting for the complete cabinet construction (base shelves and top) providing structural fastening.

Suitable for heavy duty wardrobes, bookcases, modular furniture, office furniture and dismantled furniture (Do It by Yourself).

Available for 18 - 19 mm thick panels minimum.

Consists of two separate parts: zinc alloy side bracket and plastic shelf support with zinc alloy minifix inside to be slotted into the shelf.

Shelf is subsequently vertically pressed and clicks onto the side bracket.

The rounded side bracket ledge can flush with the lower side of the shelf, by operating a face boring, making the result aesthetically very elegant.

Shelf and top panel connection to be carried out by turning the mini fix 90° from the under side.

Optional through hole Ø8 mm for connecting also the bottom panel to be carried out by turning the minifix 90° from the upper side.

Side bracket available as plain version for euro screw,

countersunk screw, M4 dowel with spreading dowel or with pre-inserted spreading bush and screw for shelf repositioning without damaging the hole.

A plastic cover cap can be used to conceal the housing on the bottom.

In accordance with the European regulations UNI EN 14749/05.



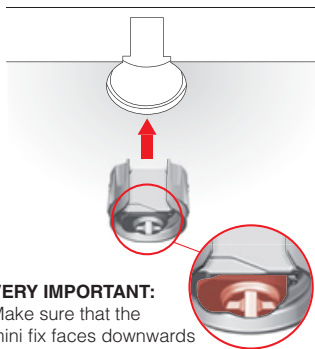
18 - 19 mm min.



UNI EN 14749/05 and UNI 8603/05

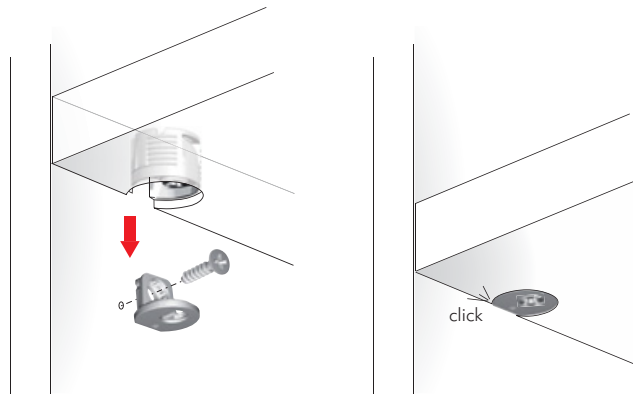


### INSTALLATION AND ASSEMBLING



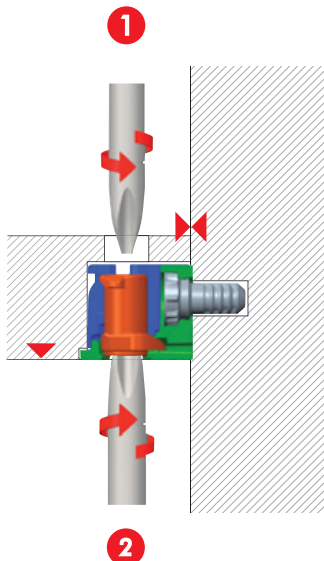
**VERY IMPORTANT:**

Make sure that the mini fix faces downwards



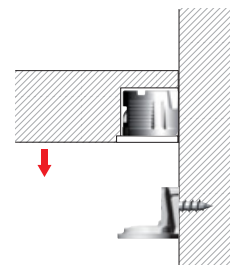
### STRUCTURAL FASTENING WITH CROSS PZ2 SCREWDRIVER:

90° turning from the upper side, for the furniture floor.

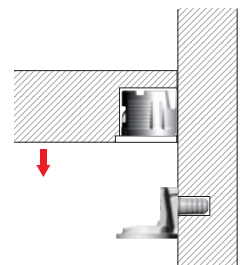


90° turning from the lower side, for the shelves and for the top.

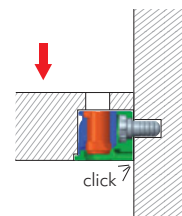
Assembling with alternative fixing options.



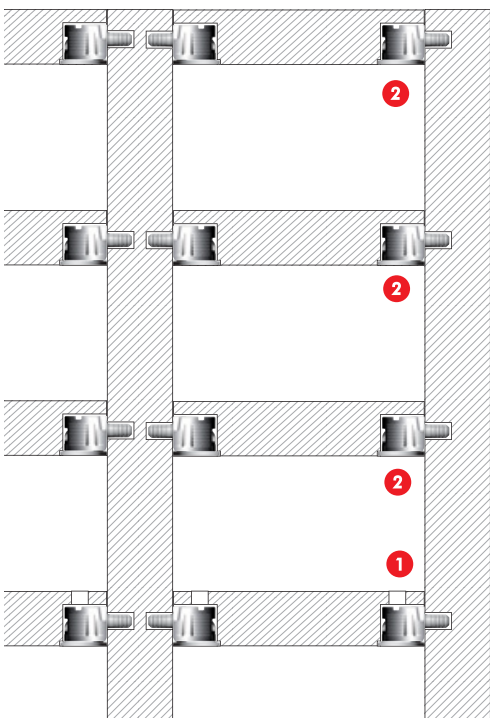
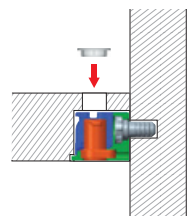
Assembling with pre-inserted spreading bush and screw to avoid hole damaging for shelf repositioning.

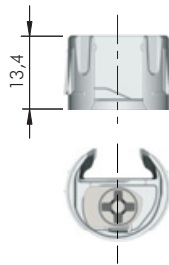
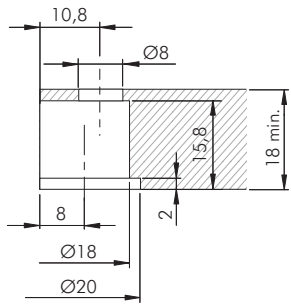


### LOCKING DETAIL:

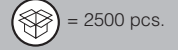
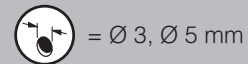
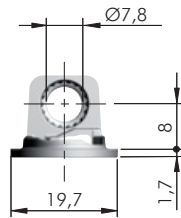
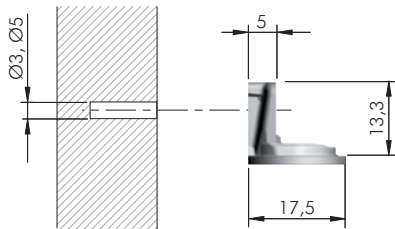


After turning the minifix.

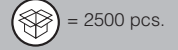
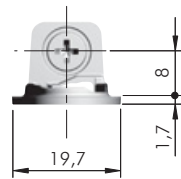
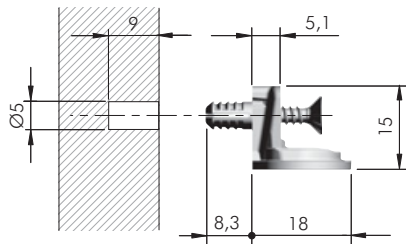




11401010IJ

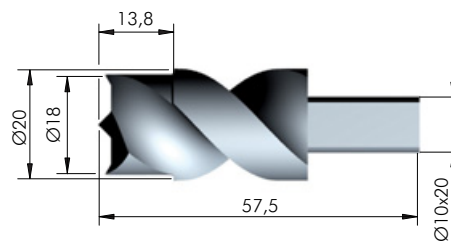
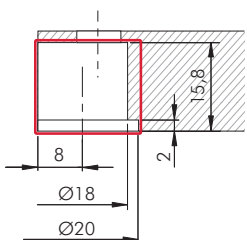


11402110YA

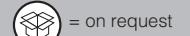


11402120YA

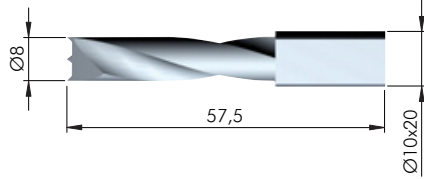
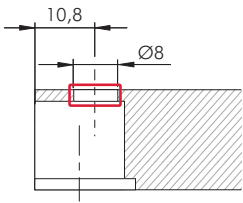
**DRILL BIT FOR PK2 SIDE BRACKET ROUND LEDGE**



HSS

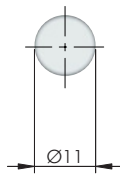
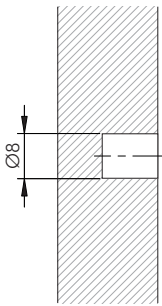


1145203000



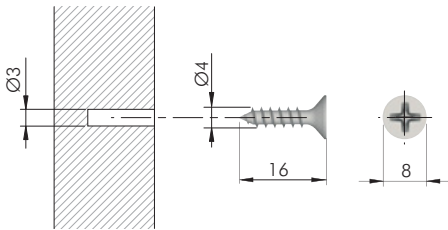
HSS	= on request
123	
1145202000	

## PK2 SIDE BRACKET ROUND LEDGE ACCESSORY

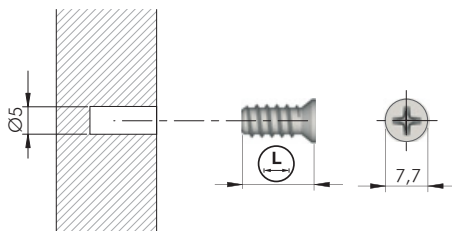


= Ø 8 mm	
EP	= 5000 pcs.
123	
23002010AB	

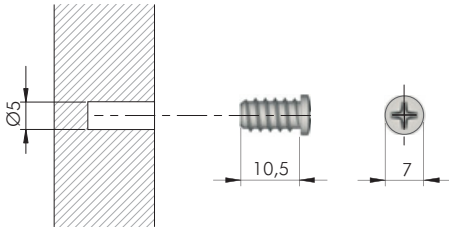
## PK2 SIDE BRACKET ROUND LEDGE FIXING ACCESSORIES



= Ø 3 mm	
= PZ2	
ST	= 5000 pcs.
123	
60101570ZN	



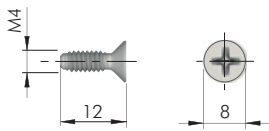
= Ø 5 mm		
= PZ2		
ST		
123	L	
60502010ZN	10	9000
60501050YA	12,7	5000
60502020ZN	13	5000
60502030ZN	15	5000



= Ø 5 mm +

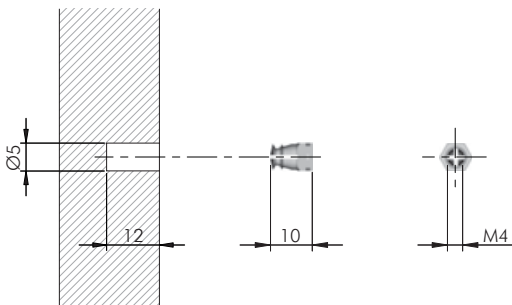
= PZ2

= 5000 pcs.



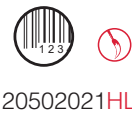
= M4 = PZ2

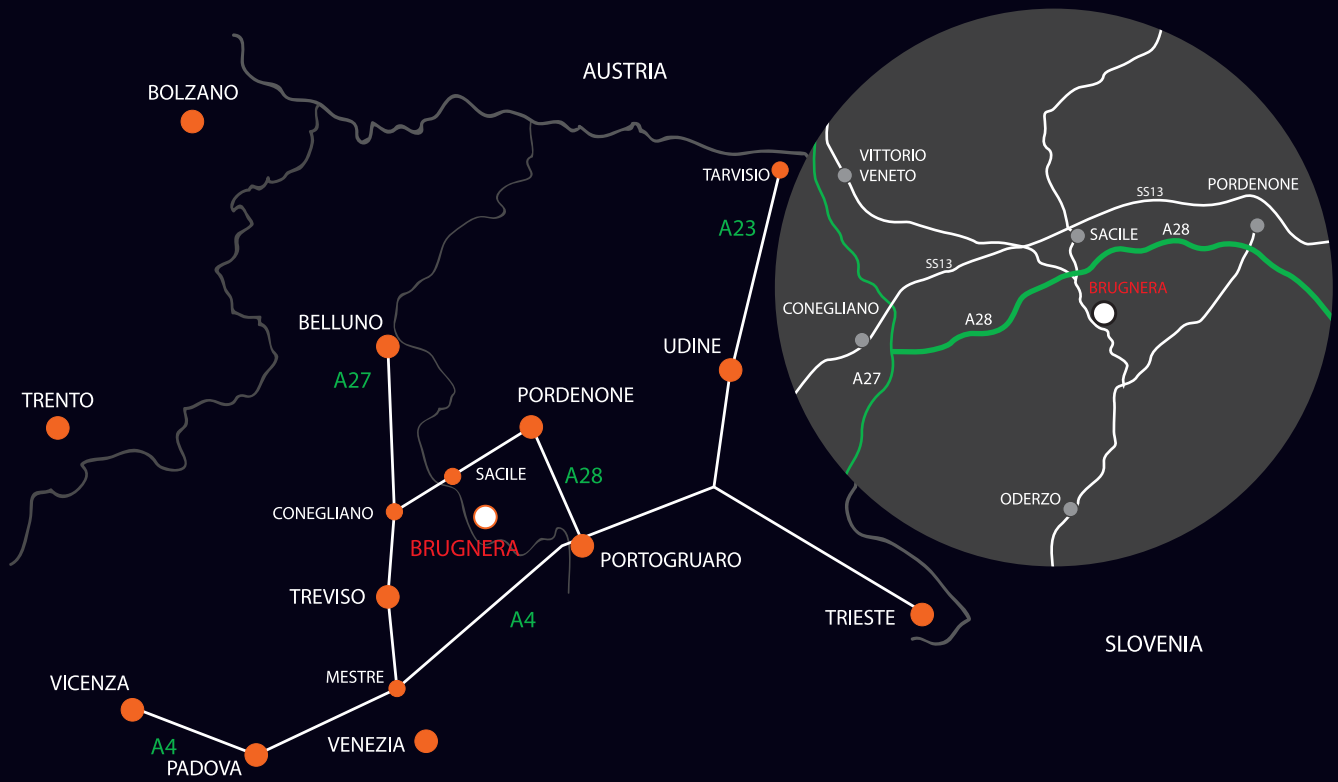
= 2000 pcs.



= Ø 5 mm = M4

= 20.000 pcs.





[www.italianaferramenta.com](http://www.italianaferramenta.com)